

Copyright © 2013, City of Colorado Springs on behalf of the Colorado Springs Utilities. All rights reserved. This work and the data contained herein may not be reproduced, modified, distributed, or used for any purpose without the express written consent of the City of Colorado Springs. This work was prepared using the best data available at the time of print. The reader should be aware that our operations may be affected by changes in personnel, equipment, or materials. The City of Colorado Springs, Colorado Springs Utilities and their employees accept no responsibility for the data contained herein.

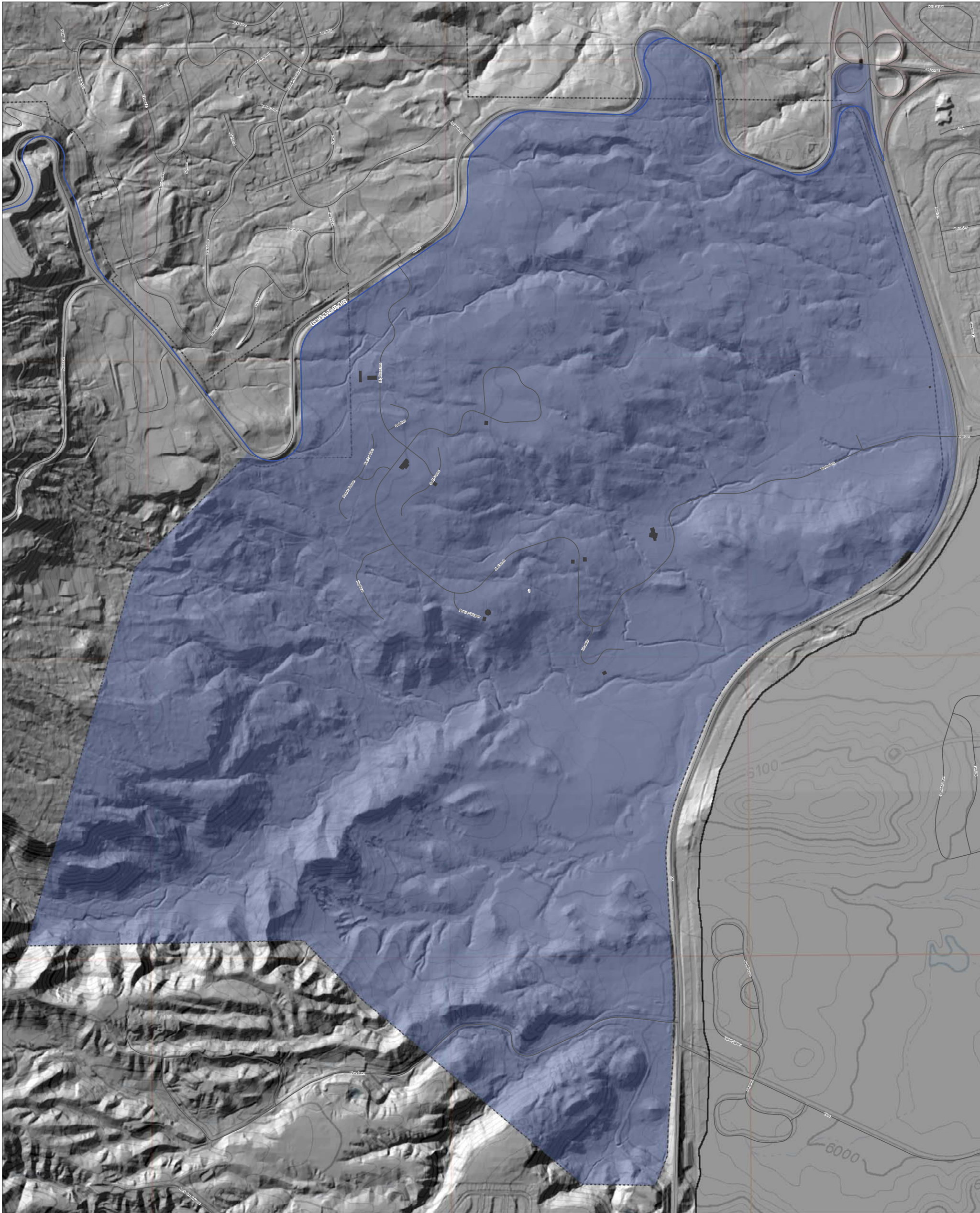


Evacuation Areas South

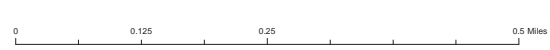


—	New/Hwy115	Evacuation Areas	13	5	City Limits
—	I25/Hwy24	1	14	6	
—	Trigger Point	10	2	7	
		11	3	8	
		12	4	9	





Evacuation Area: 1

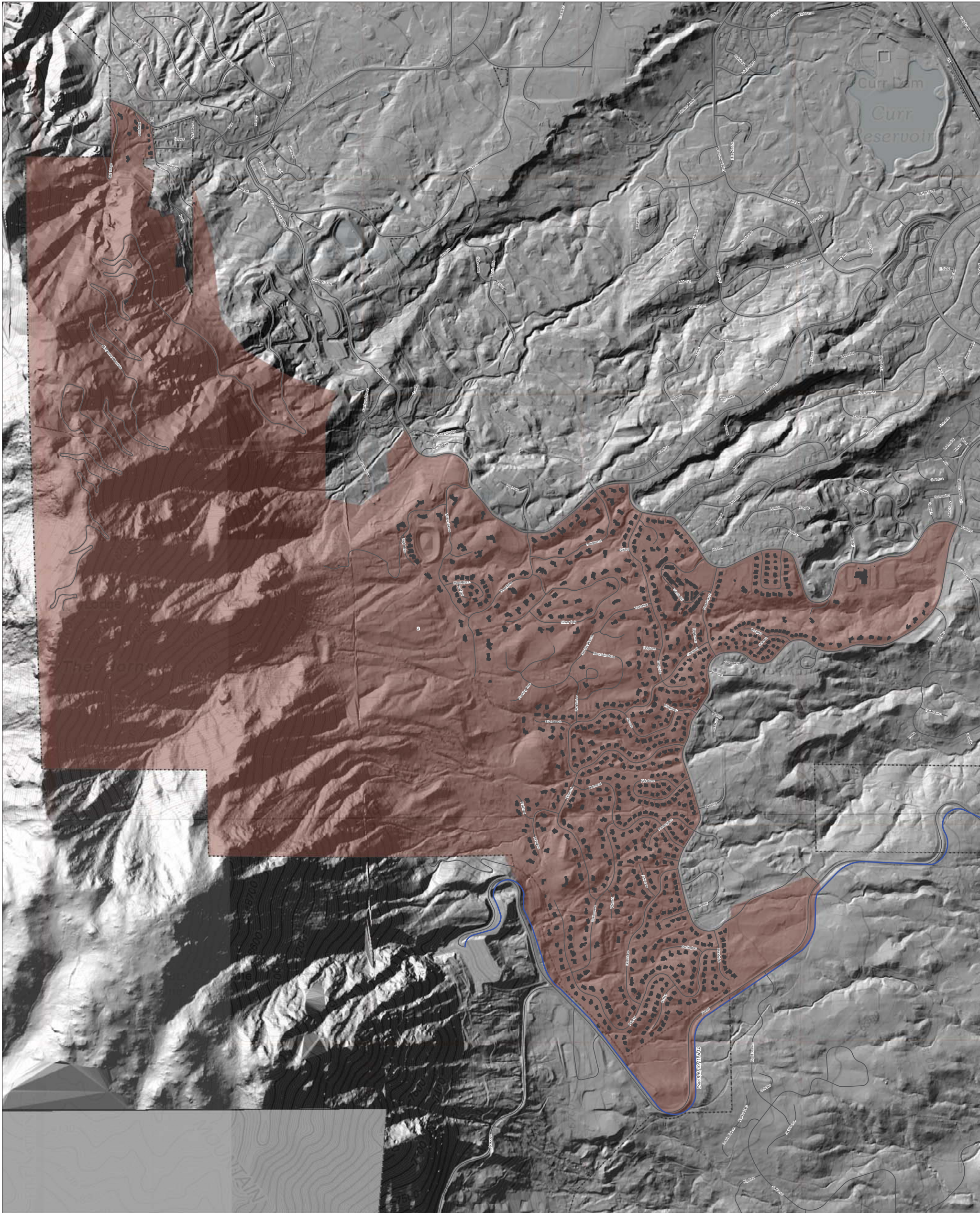


- Streets
- I25/Hwy24
- City Limits
- New/Hwy115
- Trigger Point
- Buildings



Copyright © 2015, City of Colorado Springs on behalf of the Colorado Springs Utilities. All rights reserved. This work and the data contained herein may not be reproduced, modified, distributed, or used for any purpose without the written consent of the City of Colorado Springs. This work was prepared using the best data available at the time of print. The reader should be advised that the information herein is for informational purposes only. Neither the City of Colorado Springs, the Colorado Springs Utilities, nor any of our employees or agents, represent or warrant, or assume any legal liability or responsibility for accuracy, completeness, or usefulness of any data contained herein. The City of Colorado Springs, Colorado Springs Utilities and their employees accept no liability or responsibility for the data contained herein.

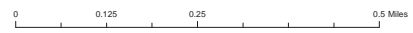
MXD Name: EvacZones_DataDriven MXD Location: \\poc-gis\fs01\p\gis\working\data\Evac\to\MXD\EvacZones_DataDriven.mxd



Copyright © 2013, City of Colorado Springs on behalf of the Colorado Springs Utilities. All rights reserved. The work shown in this data visualization is for informational purposes only. It is not intended to be used for any other purpose. The City of Colorado Springs and its employees assume no liability for any errors or omissions in this data visualization. The City of Colorado Springs, Colorado Springs Utilities and their employees assume no liability for any errors or omissions in this data visualization.



Evacuation Area: 2



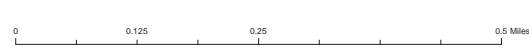
- Streets
- 125/Hwy24
- New/Hwy115
- City Limits
- Trigger Point
- Buildings



MXD Name: EvacZones_DataDriven MXD Location: \\poc-gis\fs01\p\gis\working\data\Evac\h\MXD\EvacZones_DataDriven.mxd



Evacuation Area: 3

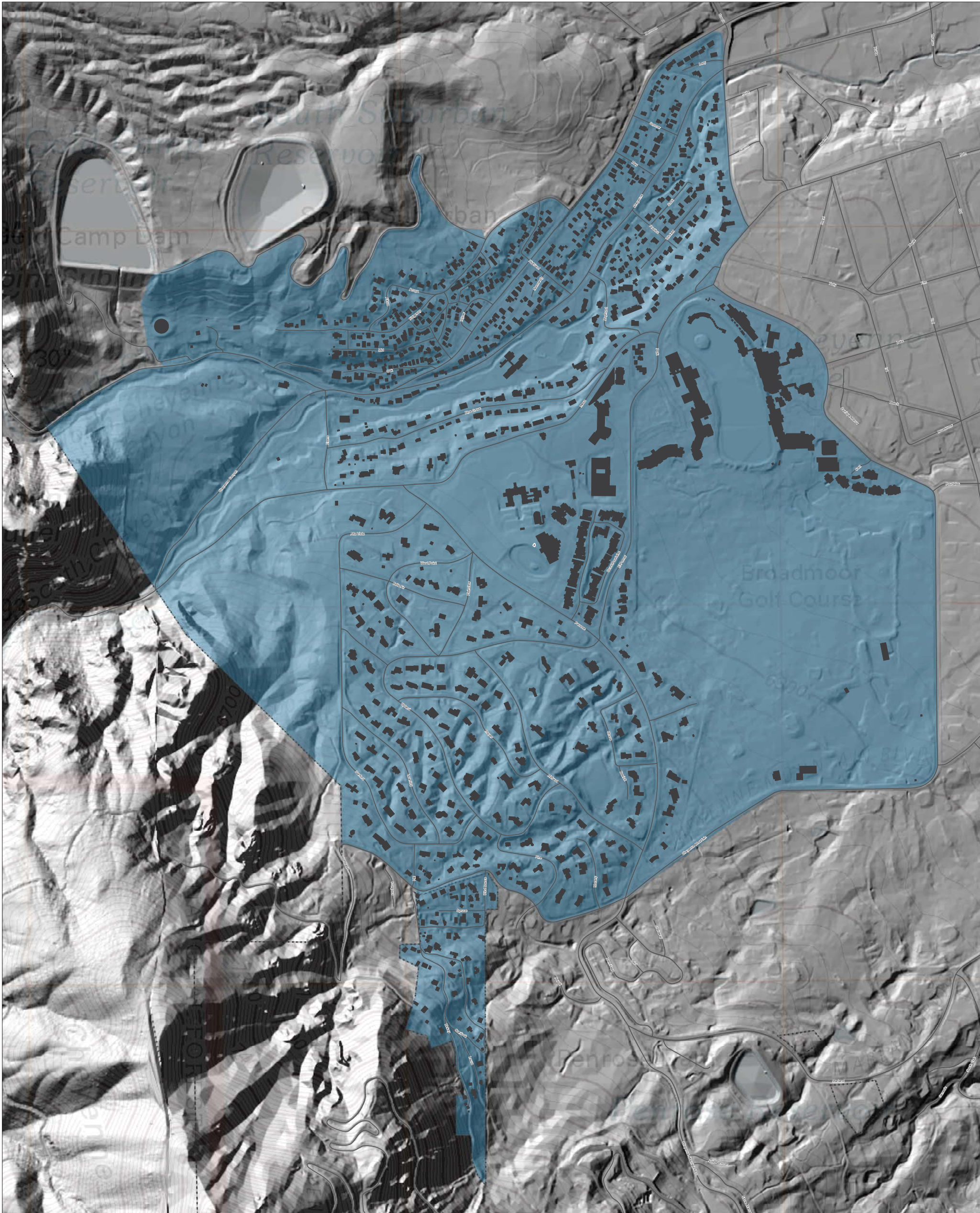


- Streets
- 125/Hwy24
- New/Hwy115
- City Limits
- Trigger Point
- Buildings



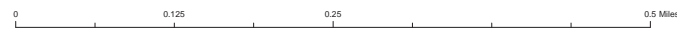
MXD Name: EvacZones_DataDriven MXD Location: \\poc-gis\fs01\p\gis\working\data\Evac\to\MXD\EvacZones_DataDriven.mxd

Copyright © 2015, City of Colorado Springs on behalf of the Colorado Springs Utilities. All rights reserved. The work shown in this document is the property of the City of Colorado Springs. It is not to be reproduced, modified, distributed, or used for any other purpose without the express written consent of the City of Colorado Springs. This work was prepared using the best data available at the time of print. The user assumes all responsibility for any errors or omissions in this document. The City of Colorado Springs, Colorado Springs Utilities and their employees accept no liability or responsibility for the data contained herein.



Evacuation Area: 4

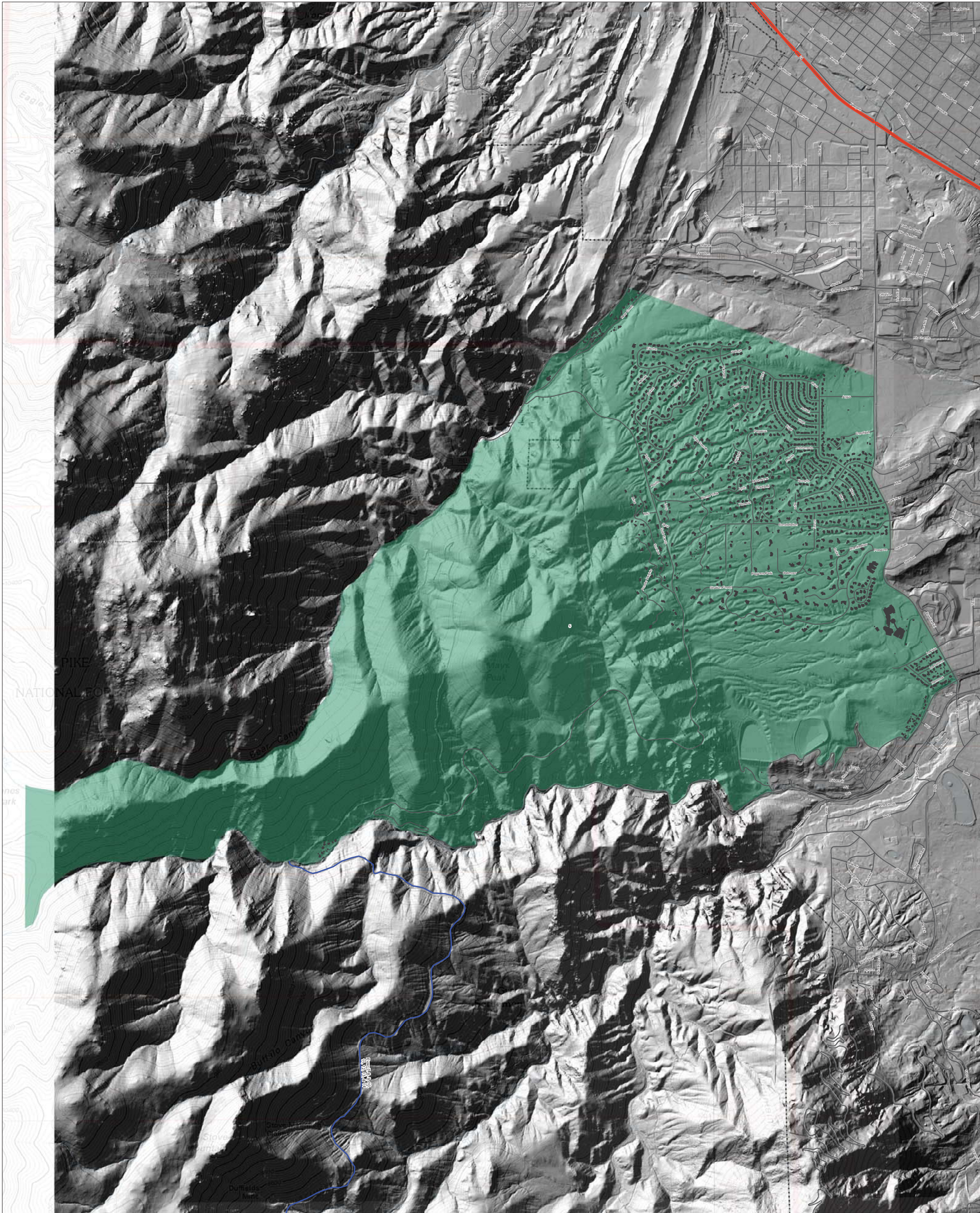
Copyright © 2015, City of Colorado Springs on behalf of the Colorado Springs Utilities. All rights reserved. This work and the data contained herein may not be reproduced, modified, distributed, republished, used to prepare derivative works, publicly displayed or commercially exploited in any manner or form without the express written consent of the City of Colorado Springs or the Colorado Springs Utilities. This work was prepared utilizing the best data available at the time of print. The accuracy and use of the information shown on this map is not guaranteed. The City of Colorado Springs, the Colorado Springs Utilities, and any of its employees accept no liability or responsibility for any errors, omissions, or inaccuracies in any data contained herein. The City of Colorado Springs, Colorado Springs Utilities and their employees accept no liability or responsibility for the data contained herein.



Streets	I25/Hwy24	City Limits
New/Hwy115 Trigger Point		
Buildings		

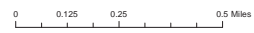
MXD Name: EvacZones_DataDriven MXD Location: \\poc-gis\01\p\gis\working\data\Evac\Info\MXD\EvacZones_DataDriven.mxd





Evacuation Area: 5

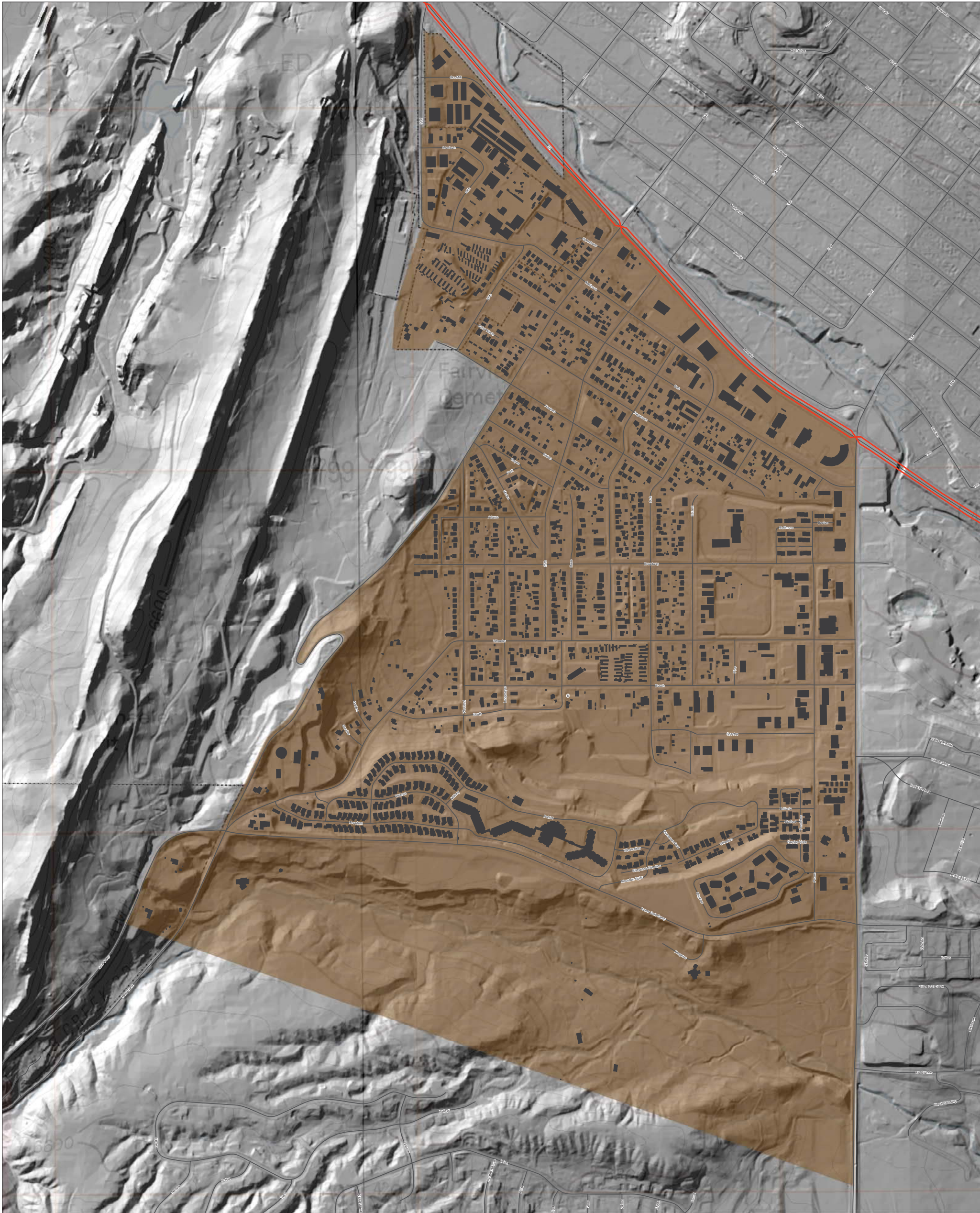
Copyright © 2015, City of Colorado Springs on behalf of the Colorado Springs Utilities. All rights reserved. This work and the data contained herein may not be reproduced, modified, distributed, or used for any purpose without the express written consent of the City of Colorado Springs. This work was prepared utilizing the best data available at the time of print. The reader uses and is advised to use this work at their own risk. The City of Colorado Springs, the Colorado Springs Utilities, and any of our employees make no warranty, representation or assurance of any kind, liability or responsibility for accuracy, completeness, or timeliness of any data contained herein. The City of Colorado Springs, Colorado Springs Utilities and their employees explicitly disclaim any responsibility for the data contained herein.



- Streets
- 125/Hwy24
- City Limits
- New/Hwy115 Trigger Point
- Buildings



MXD Name: EvacZones_DataDriven MXD Location: \\poc-gis\fs01\p\gis\working\data\Evac\h\MXD\EvacZones_DataDriven.mxd



Evacuation Area: 6



- Streets
- 125/Hwy24
- City Limits
- New/Hwy115
- Trigger Point
- Buildings



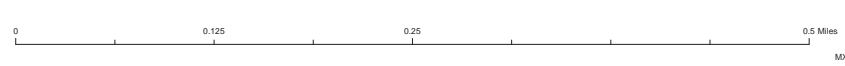
MXD Name: EvacZones_DataDriven MXD Location: \\poc-gis\fs01\p\gis\working\data\Evac\h\MXD\EvacZones_DataDriven.mxd

Copyright © 2015, City of Colorado Springs on behalf of the Colorado Springs Utilities. All rights reserved. The work shown in this document is for informational purposes only. It is not intended to be used for any other purpose. The City of Colorado Springs and its employees assume no liability for any errors or omissions in this document. The City of Colorado Springs and its employees assume no liability for any errors or omissions in this document. The City of Colorado Springs and its employees assume no liability for any errors or omissions in this document.



Evacuation Area: 7

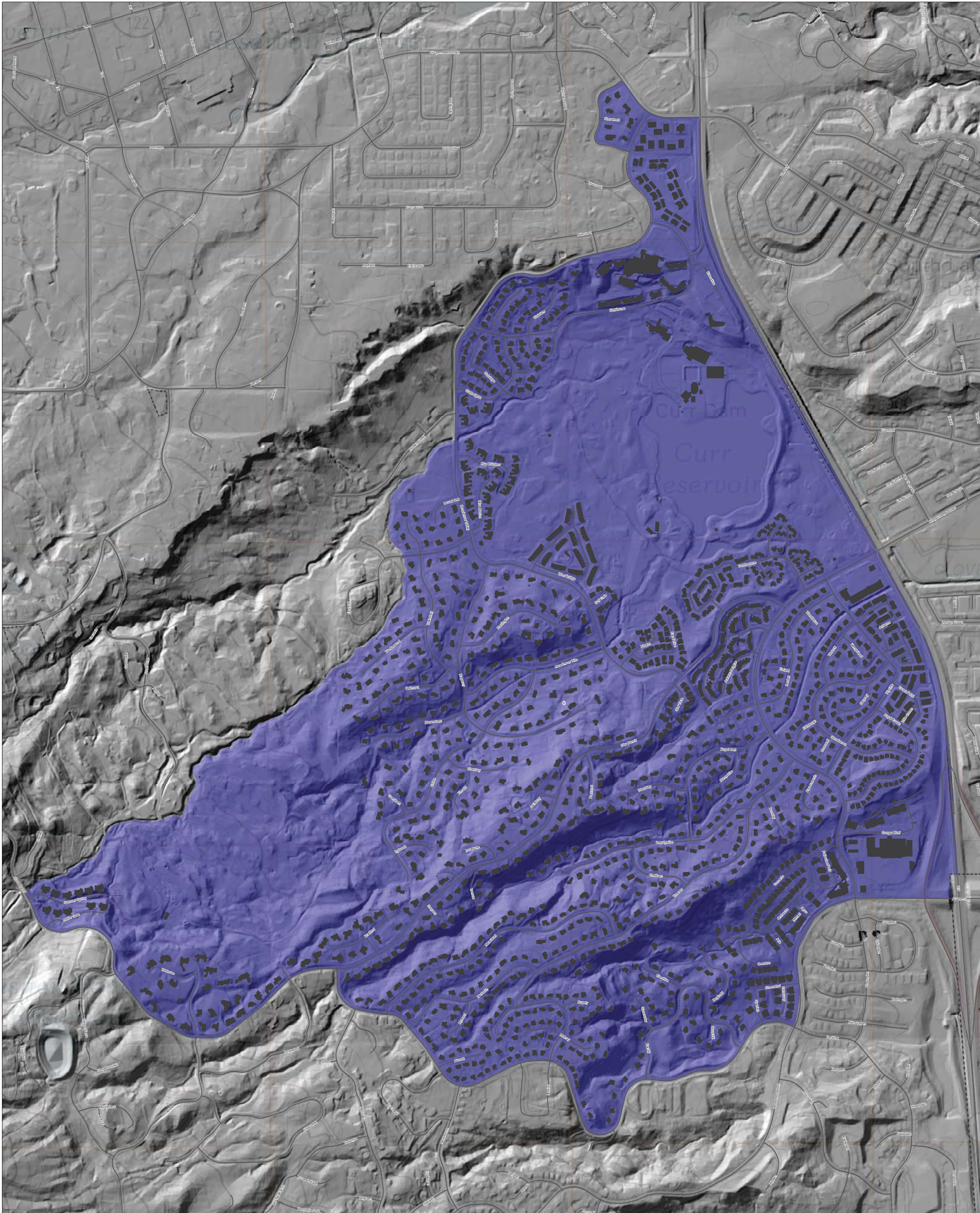
Copyright © 2015, City of Colorado Springs on behalf of the Colorado Springs Utilities. All rights reserved. This work and the data contained herein may not be reproduced, modified, distributed, republished, used to prepare derivative works, publicly displayed or commercially exploited in any manner without the express written consent of the City of Colorado Springs. This work was prepared utilizing the best data available at the time of print. The reader should be advised that the information contained herein is subject to change without notice. The City of Colorado Springs, the Colorado Springs Utilities, and any of our employees make no warranty, representation or assurance of accuracy or responsibility for any errors, omissions, or liabilities of any kind, including those arising from the use of this information. The City of Colorado Springs, Colorado Springs Utilities and their employees accept no liability for any responsibility for the data contained herein.



- Streets
- 125/Hwy24
- City Limits
- New/Hwy115
- Trigger Point
- Buildings



MXD Name: EvacZones_DataDriven MXD Location: \\poc-gis\fs01\p\gis\working\data\Evac\h\MXD\EvacZones_DataDriven.mxd



Evacuation Area: 8

Copyright © 2013, City of Colorado Springs on behalf of the Colorado Springs Utilities. All rights reserved. This work and the data contained herein may not be reproduced, modified, distributed, republished, used in any manner, or otherwise used in any way without the express written consent of the City of Colorado Springs. This work was prepared utilizing the best data available at the time of print. The user assumes all responsibility for any errors or omissions in this work, and the user agrees to hold the City of Colorado Springs harmless from any and all claims, damages, or liabilities, or any other consequences or actions arising from the use of this work. The City of Colorado Springs, Colorado Springs Utilities and their employees accept no liability for any errors or omissions in this work.



- Streets
- I25/Hwy24
- City Limits
- New/Hwy115 Trigger Point
- Buildings

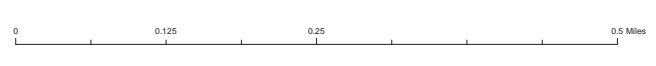


MXD Name: EvacZones_DataDriven MXD Location: \\poc-gis\fs01\p\gis\working\data\Evac\WorkingData\Evac\8\MXD\EvacZones_DataDriven.mxd



Evacuation Area: 9

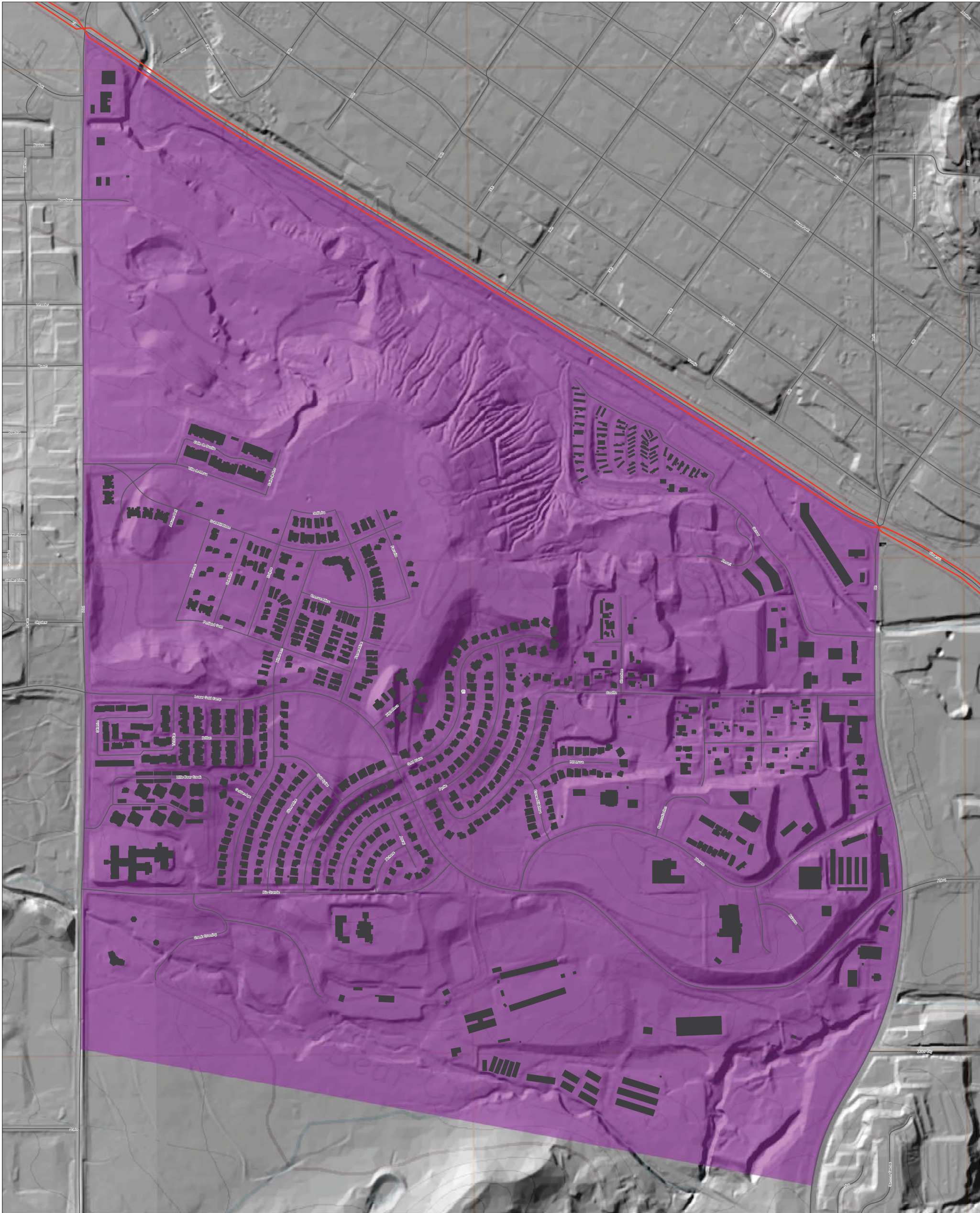
Copyright © 2015, City of Colorado Springs on behalf of the Colorado Springs Utilities. All rights reserved. This work and the data contained herein may not be reproduced, modified, distributed, republished, used to prepare derivative works, publicly displayed or commercially exploited in any manner or form without the express written consent of the City of Colorado Springs. This work was prepared utilizing the best data available at the time of print for the intended use and is intended for internal use only. Neither the City of Colorado Springs, the Colorado Springs Utilities, nor any of our employees make any warranty, representation or assurance of any legal liability or responsibility for accuracy, completeness or timeliness of any data contained herein. The City of Colorado Springs, Colorado Springs Utilities and their employees accept no liability or responsibility for the data contained herein.



- Streets
- 125/Hwy24
- New/Hwy115
- City Limits
- Trigger Point
- Buildings

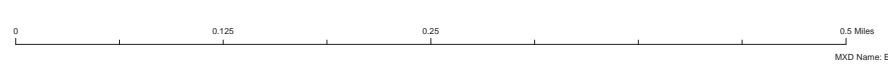


MXD Name: EvacZones_DataDriven MXD Location: \\poc-gis\fs01\p\gis\working\data\Evac\h\MXD\EvacZones_DataDriven.mxd



Evacuation Area: 11

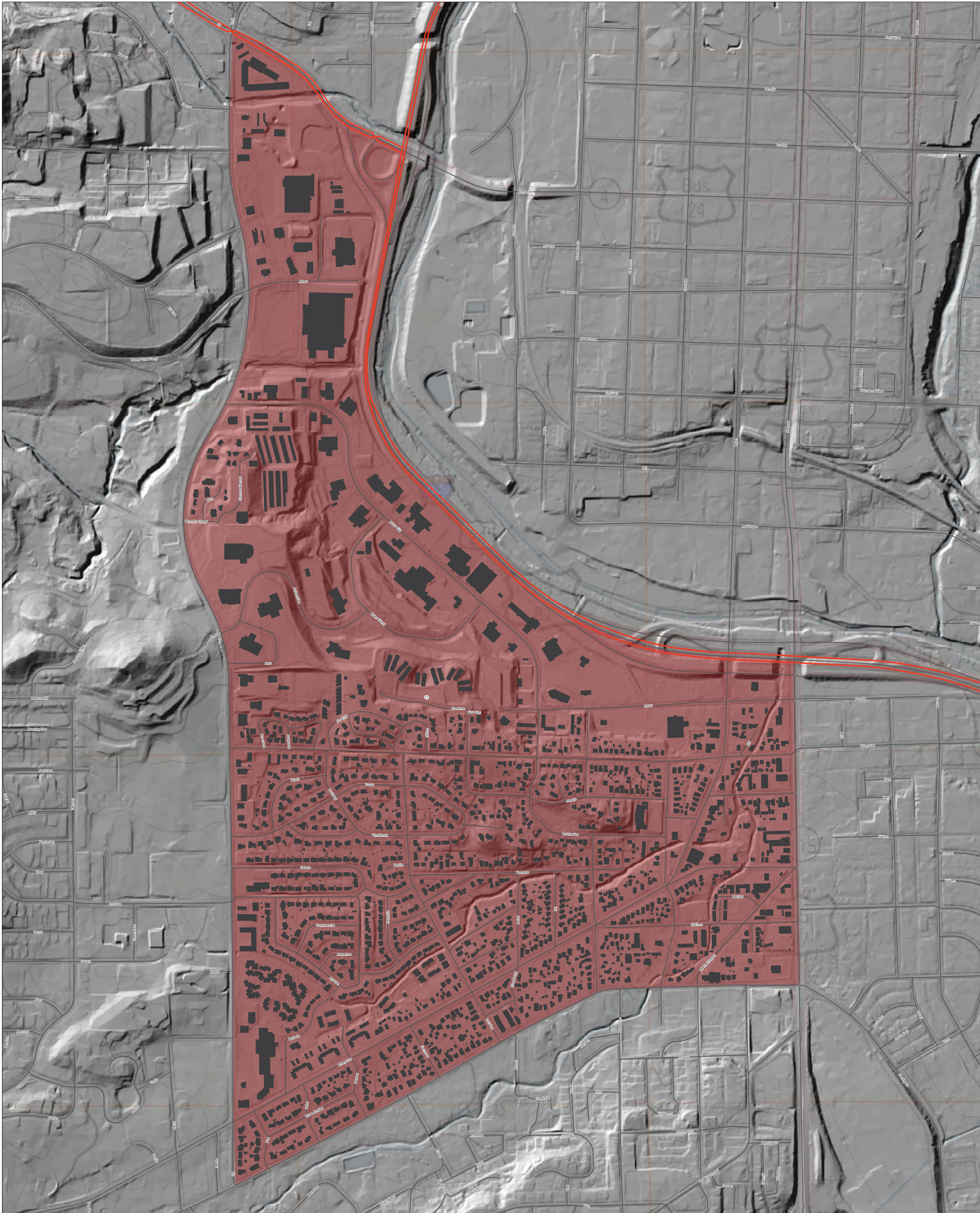
Copyright © 2015, City of Colorado Springs on behalf of the Colorado Springs Utilities. All rights reserved. This work and the data contained herein may not be reproduced, modified, distributed, republished, used to prepare derivative works, publicly displayed or commercially exploited in any manner or form without the express written consent of the City of Colorado Springs or the Colorado Springs Utilities. This work was prepared utilizing the best data available at the time of print for the intended use and is intended for internal use only. Neither the City of Colorado Springs, the Colorado Springs Utilities, nor any of our employees make any warranty, representation or assurance any legal liability or responsibility for accuracy, completeness, or usefulness of any data contained herein. The City of Colorado Springs, Colorado Springs Utilities and their employees explicitly disclaim any responsibility for the data contained herein.



- Streets
- 125/Hwy24
- City Limits
- New/Hwy115
- Trigger Point
- Buildings

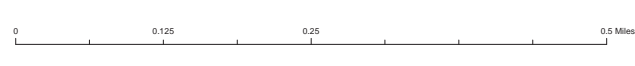


MXD Name: EvacZones_DataDriven MXD Location: \\poc-gis\fs01\p\gis\working\data\Evac\Info\MXD\EvacZones_DataDriven.mxd



Evacuation Area: 12

Copyright © 2013, City of Colorado Springs on behalf of the Colorado Springs Utilities. All rights reserved. This work and the data contained herein may not be reproduced, modified, distributed, republished, used to prepare derivative works, publicly displayed or commercially exploited in any manner or form without the express written consent of the City of Colorado Springs. This work was prepared utilizing the best data available at the time of print. The reader should be advised that our information may be incomplete, outdated or otherwise contain errors. The City of Colorado Springs, Colorado Springs Utilities and their employees accept no liability or responsibility for any errors or omissions in any data contained herein.



- Streets
- 125/Hwy24
- City Limits
- New/Hwy115 Trigger Point
- Buildings

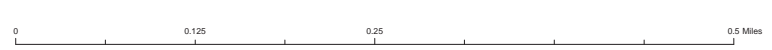


MXD Name: EvacZones_DataDriven MXD Location: \\poc-gis\fs01\p\gis\working\data\Evac\h\MXD\EvacZones_DataDriven.mxd



Evacuation Area: 13

Copyright © 2013, City of Colorado Springs on behalf of the Colorado Springs Utilities. All rights reserved. This work and the data contained herein may not be reproduced, modified, distributed, republished, used to prepare derivative works, or otherwise used in any manner without the express written consent of the City of Colorado Springs or the Colorado Springs Utilities. This work was prepared using the best data available at the time of print. The reader should be advised that the information contained herein is subject to change without notice and the City of Colorado Springs and the Colorado Springs Utilities assume no liability for any errors or omissions or for any consequences arising from the use of the information contained herein. The City of Colorado Springs, Colorado Springs Utilities and their employees accept no responsibility for the data contained herein.



- Streets
- 125/Hwy24
- City Limits
- New/Hwy115
- Trigger Point
- Buildings

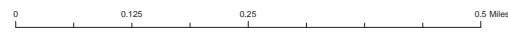


MXD Name: EvacZones_DataDriven MXD Location: \\poc-gis\fs01\p\gis\working\data\Evac\to\MXD\EvacZones_DataDriven.mxd



Evacuation Area: 14

Copyright © 2013, City of Colorado Springs on behalf of the Colorado Springs Utilities. All rights reserved. The work shown in this document is the property of the City of Colorado Springs. It is provided for informational purposes only and is not intended to be used for any other purpose. The work was prepared using the best data available at the time of print. The user assumes all responsibility for any errors or omissions. The City of Colorado Springs, Colorado Springs Utilities and their employees accept no liability for any errors or omissions in this document.



- Streets
- 125/Hwy24
- City Limits
- 125/Hwy115
- Trigger Point
- Buildings



MXD Name: EvacZones_DataDriven MXD Location: \\poc-gis\fs01\p\gis\working\data\Evac\Info\MXD\EvacZones_DataDriven.mxd